

## Table of Contents

<b>Applications</b>	2
<b>Description</b>	2
Main components	2
Advantages	2
Safety devices	2
Options	2
<b>Technical specifications</b>	3
<b>Components</b>	3
Trolleys	3
Platform	4
Pneumatic equipment	5
<b>Controls</b>	7

**CE** The ALTA «A» equipment complies with European Union directives and is manufactured according to ISO 9001.

## APPLICATIONS

The air-driven ALTA «A» platform has been designed for temporary applications where operators and their work equipment must be lifted to work places at height. It is perfectly suited to inspection and maintenance work on internal gas tank walls and other places with risk of explosion. Its design allows a certification for use in areas with risk of explosion according to ATEX area II 3G EEx c IIB T3 (option).

## DESCRIPTION

### Main components

#### Platform

2 stirrups: hot dip galvanized steel

Floor panel: aluminium

Guard-rail: aluminium

#### Lifting mechanism

2 TIRAK™ XA-300P traction hoists with pneumatic motor drive (21), equipped with service brake and overload detection.

#### Suspension wire ropes

Galvanized steel wire ropes, one lifting wire rope (23) and one safety wire rope (24) per suspension point (certified by TRACTEL®).

#### Fall arrest device

The BLOCSTOP™ BSA fall-arrest device (22) engages on the safety wire rope (24) in the event of a failure on the lifting wire rope (manufactured by TRACTEL®). The BLOCSTOP™ also ensures the detection of a tilting platform.

#### Air preparation unit

The air preparation unit consists of a filter, a lubricator, a pressure regulator and a manometer. It protects the pneumatic motors and ensures reliable operation and a long life span.

#### Suspension points (option)

Traversing is ensured by two air-driven monorail trolleys; they can be adapted to I- or H-beam types, beam width 90 to 305 mm.

#### Controls

The lifting movements are controlled with two control levers (43 and 44) mounted on the guard-rail. Lateral movement of the traversing version is controlled via pendant control boxes.

## Variants

Code	Description
85828	ALTA «A» platform without traversing
85838	Two air-driven trolleys suitable for I- or H-beam types, beam width 90 to 305 mm

## Advantages

- Quick access to areas with explosive atmosphere
- Easy maintenance and inspection work at height
- Safe and ergonomic working position
- Rugged structure
- Safe and reliable hoists
- Very low and easy maintenance
- Easy to use

## Safety devices

To ensure safe operation without danger to personnel and in accordance with the European standard EN 1808, the platform is fitted with the following safety devices:

### ... integrated in the TIRAK™ hoists

- Service brake
- Overspeed brake
- Overload safety device
- Manual emergency lowering in case of air pressure loss

### ... additional safety devices

- EMERGENCY STOP
- 2 BLOCSTOP™ BSA fall arrest devices
- Tilt detection device
- 2 upper limit switches

## Options

- Certification ATEX area II 3G EEx c IIB T3
- Water tank

## TECHNICAL SPECIFICATIONS

Overall dimensions (l x w x h)	2,350 x 990 x 2,100 mm
Internal dimensions of the platform	2,000 x 600 mm
Rated capacity (kg)	240 kg
Lifting speed (m/mn)	9 m/min
Traversing speed	1-10 m/min
Min. air pressure	6 bars
Air consumption	3.2 m <sup>3</sup> /min
Load per trolley (nominal)	350 daN

## COMPONENTS

### Trolleys

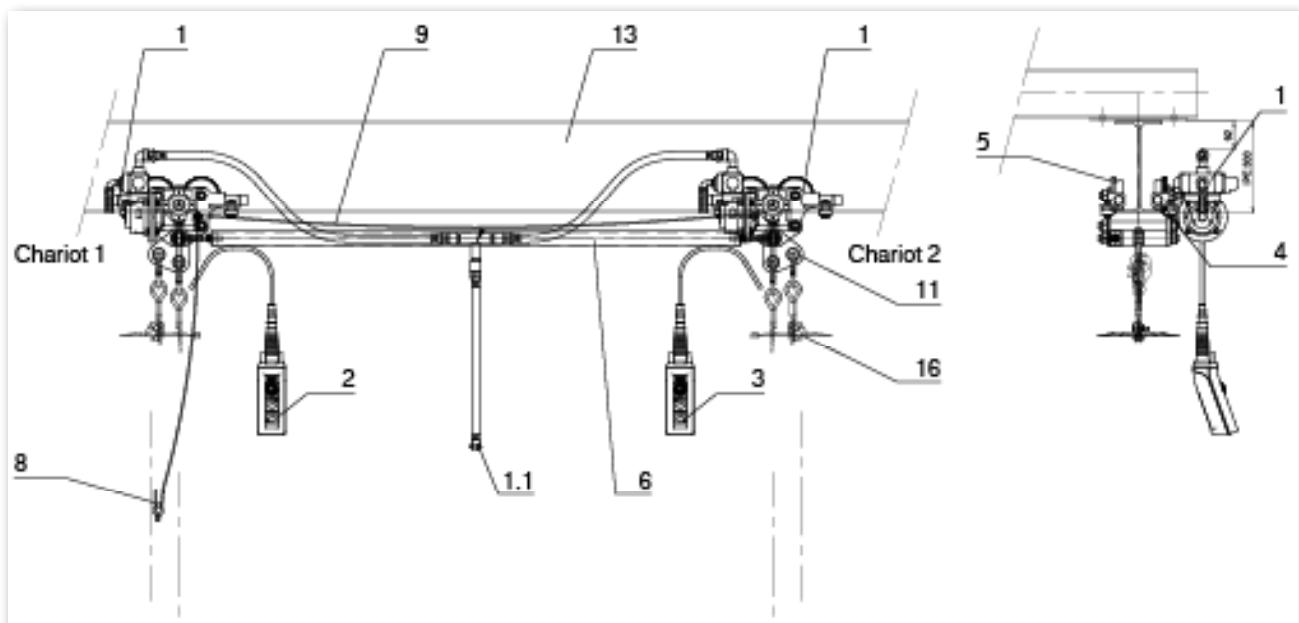


Fig. 1. - Air-driven trolleys (option)

- 1 Air-driven trolley
- 1.1 Flexible air pressure hose platform - trolley (L = 2 m, 3/4")
- 2 Pendant control box traversing trolley 1
- 3 Pendant control box traversing trolley 2
- 4 Gear for traversing rollers
- 5 Traversing roller
- 6 Connecting rod
- 8 Ground wire cable trolley to platform with clamp (1x 25 mm<sup>2</sup>)
- 9 Ground wire cable trolley to trolley without clamp (1x 25 mm<sup>2</sup>)
- 11 Tilting suspension stirrup
- 13 Rail
- 16 End stop buffer plate

## Platform

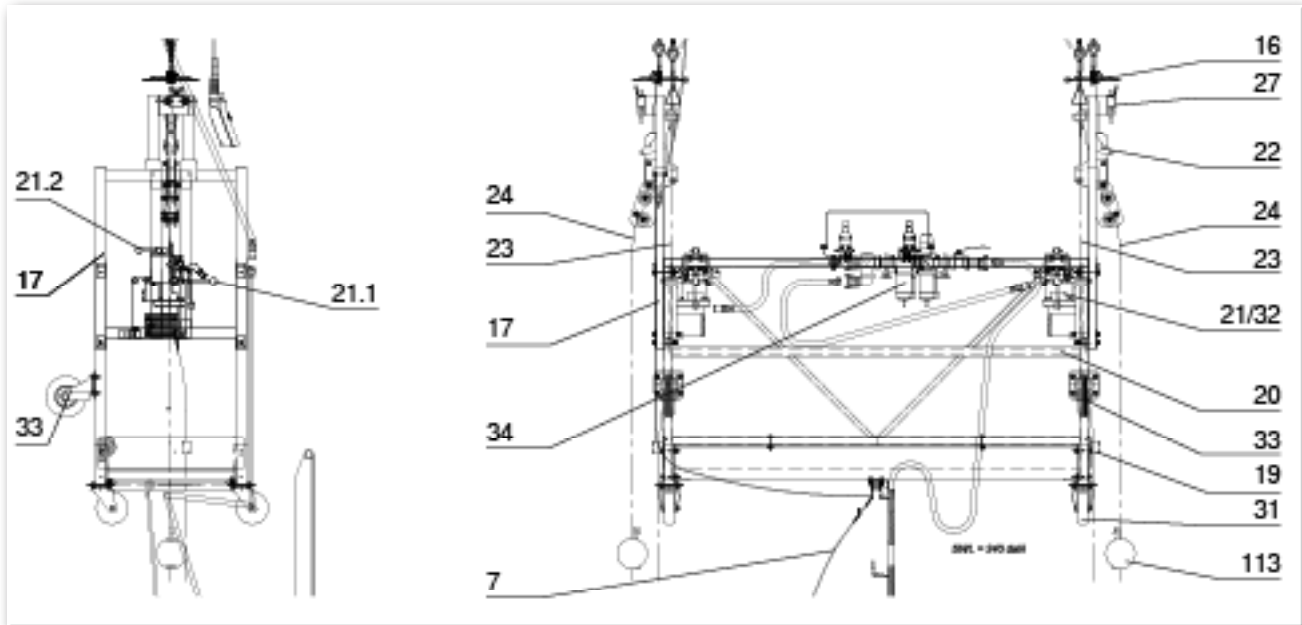


Fig. 2. - ALTA «A» platform equipped with two air-driven TIRAK™ XA-300P hoists

- 7 Ground wire cable platform to ground with clamp (60 m, 1x 25 mm<sup>2</sup>)
- 16 End stop buffer plate
- 17 Stirrup
- 19 Wire rope guide
- 20 Guard-rail
- 21 Air-driven TIRAK™ XA-300P hoist
- 21.1 TIRAK™ control lever LIFTING / LOWERING
- 21.2 Brake lever / MANUAL LOWERING
- 22 BLOCSTOP™ BSA fall arrest device
- 23\* Lifting wire rope
- 24\* Safety wire rope
- 27 Upper limit switch
- 31 Castor wheel
- 32 Load limiter integrated in TIRAK™ hoist
- 33 Facade protection roller
- 34 Air preparation unit
- 113 Ballast weight for safety wire rope

\* Spare part

## Pneumatic equipment

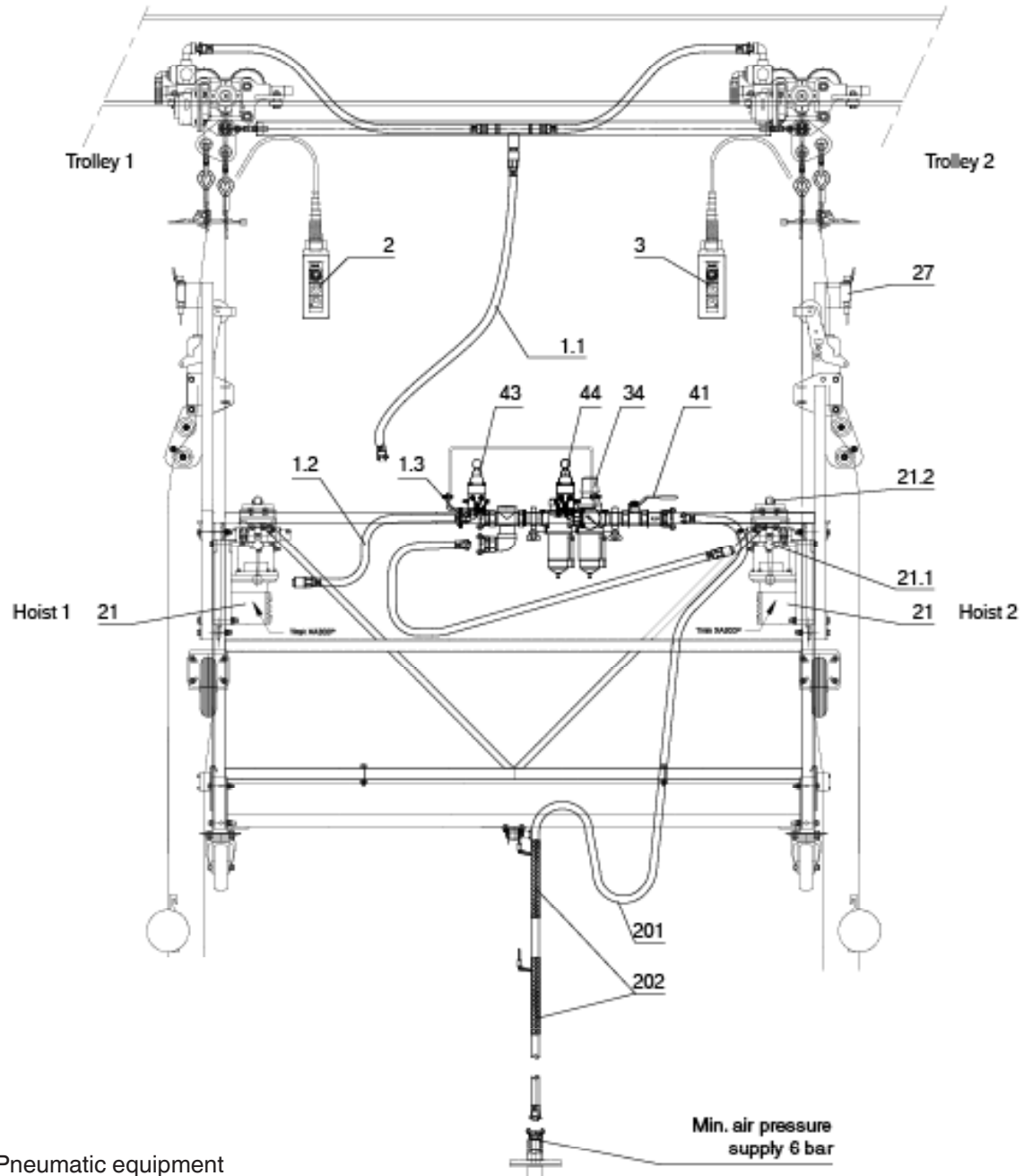


Fig. 3. - Pneumatic equipment

- |      |   |      |   |
|------|---|------|---|
| 1.1  | Flexible air pressure hose platform – trolley (L = 2 m, 3/4") | 41   | Main supply valve / EMERGENCY STOP              |
| 1.2  | Flexible air pressure hose TIRAK™ hoist                       | 43   | Control lever LIFTING / LOWERING hoist 1        |
| 1.3  | Air pressure connector  | 44   | Control lever LIFTING / LOWERING hoist 2        |
| 2    | Pendant control box traversing trolley 1                      | 201* | Flexible air pressure main supply hose (1 1/4") |
| 3    | Pendant control box traversing trolley 2                      | 202  | Cable-securing sleeve                           |
| 21   | Air-driven TIRAK™ XA-300P hoist                               |      |   |
| 21.1 | TIRAK™ control lever LIFTING / LOWERING                       |      |   |
| 21.2 | Brake lever / MANUAL LOWERING                                 |      |   |
| 27   | Upper limit switch  |      |   |
| 34   | Air preparation unit  | *    | Spare part: set of flexible air pressure hoses  |

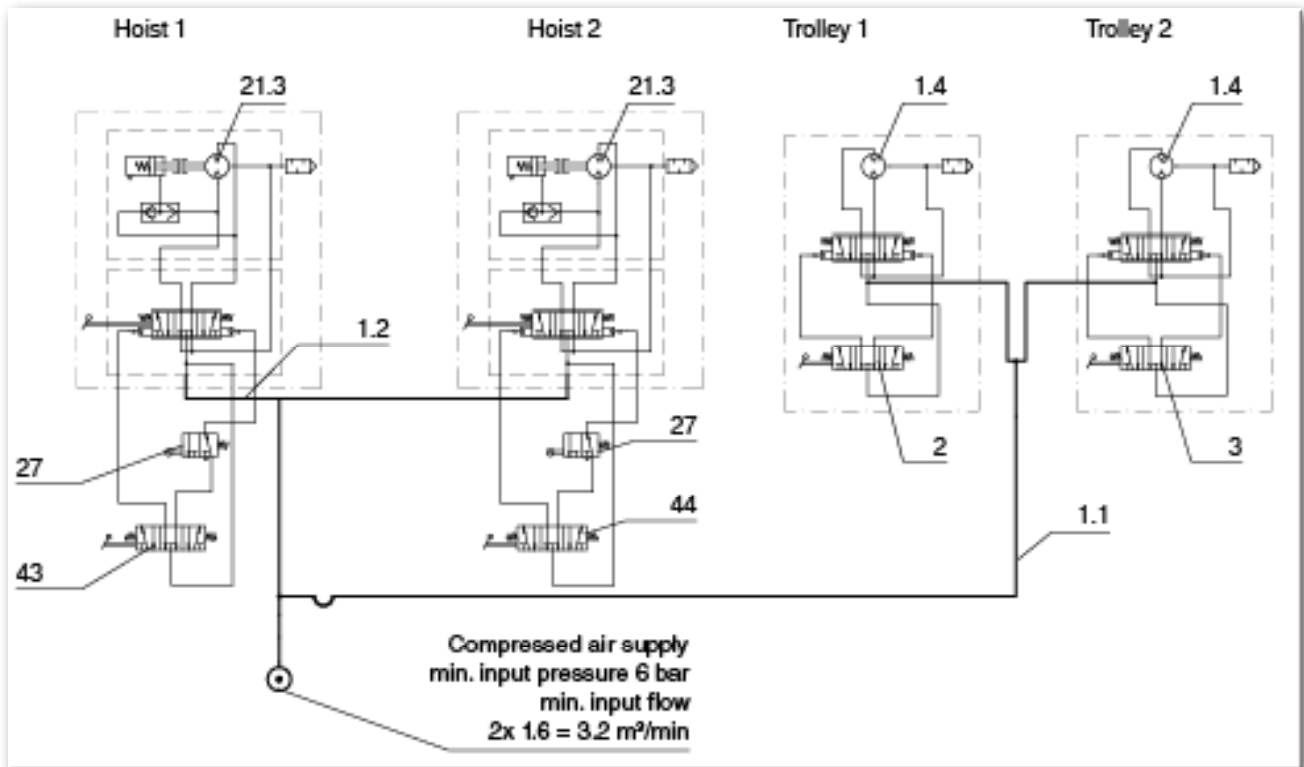


Fig. 4. - Pneumatic diagram

- 1.1 Flexible air pressure hose platform - trolley  
(L = 2 m, 3/4")
- 1.2 Flexible air pressure hose TIRAK™ hoist
- 1.4 Air motor for trolley
- 2 Pendant control box traversing trolley 1
- 3 Pendant control box traversing trolley 2
- 21.3\* Air motor for TIRAK™ hoist
- 27 Upper limit switch
- 43 Control lever LIFTING / LOWERING  
hoist 1
- 44 Control lever LIFTING / LOWERING  
hoist 2

\* Spare part

## CONTROLS

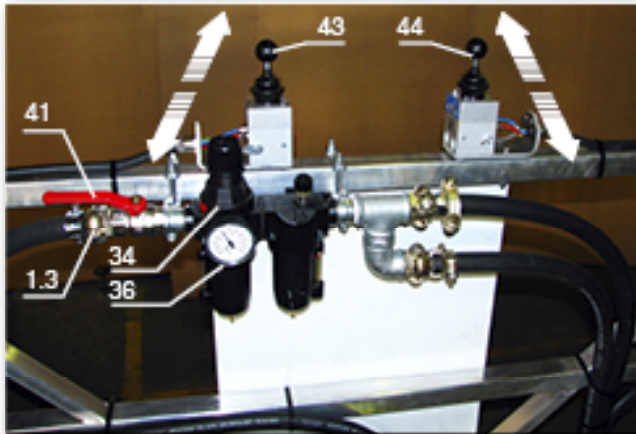


Fig. 5. - Pneumatic equipment

### Central air preparation unit

- 1.3 Air pressure connector
- 34\* Air preparation unit
- 36 Manometer
- 41 Main supply valve / EMERGENCY STOP
- 43 Control lever LIFTING / LOWERING hoist 1
- 44 Control lever LIFTING / LOWERING hoist 2



Fig. 6. - Trolley controls

### Traversing

- 42 EMERGENCY STOP - traversing
- 45\*\* Traverse trolley left
- 46\*\* Traverse trolley right

- \* Spare part
- \*\* Double-speed button

## Contact

Tractel Secalt S.A.  
12, Rue de l'Industrie • L-3895 Foetz  
P.O. Box 75 • L-4001 Esch-sur-Alzette  
Phone: (352) 43 42 42-1  
Fax (352) 43 42 42-200  
e-mail: secalt@tractel.com  
www.tractel.com